

FALL 2019/WINTER 2020

Native Plant Trust LEARN+GROW

PUBLIC PROGRAMS OF NATIVE PLANT TRUST



*Conserving and promoting
New England's native plants
to ensure healthy, biologically
diverse landscapes*

The mission of Native Plant Trust is to conserve and promote the region's native plants to ensure healthy, biologically diverse landscapes. Native Plant Trust is the nation's first plant conservation organization and the only one solely focused on New England's native plants. We save native plants in the wild, grow them for gardens and restorations, and educate others on their value and use. We are based at Garden in the Woods, a renowned native plant botanic garden that attracts visitors from all over the world. From this flagship property in Framingham, Massachusetts, 25 staff and many of our 1,500 trained volunteers work throughout New England each year to monitor and protect rare and endangered plants, collect and preserve seeds to ensure biological diversity, detect and control invasive species, conduct research, and offer a range of educational programs. Native Plant Trust also operates a nursery at Nasami Farm in western Massachusetts and manages six sanctuaries in Maine, New Hampshire, and Vermont that are open to the public.

TABLE OF CONTENTS

Certificate Program	3
Events	5
Online Learning	7
Botany + Conservation.....	12
Field Studies.....	22
Conservation Lectures.....	26
Horticulture + Design.....	27
Landscape Studies.....	33
Children + Families	36
Registration + Membership.....	37

Native Plant Trust
 180 Hemenway Road,
 Framingham, MA 01701
 T 508-877-7630 F 508-877-3658
 TTY 508-877-6553
education@NativePlantTrust.org
www.NativePlantTrust.org

Volume 12, Number 2
 Fall 2019/Winter 2020

LEARN + GROW is published twice a year by Native Plant Trust. Members receive discounts on all programs. Annual membership dues start at \$40 for individuals. See page 37 for information.

© 2019 by Native Plant Trust. All rights reserved. No material in this publication may be reproduced or used in any way without written consent. For permission, contact Editor, Native Plant Trust, 180 Hemenway Road, Framingham, MA

Cover photo by John Benford

This publication was made possible through the generosity of Jackie and Tom Stone.

Calico American-aster (*Symphycarphum lateriflorum*)



REGIONAL INDEX

Date Program Page

ONLINE LEARNING

8/6	Woodland Gardens	8
8/16	Plants 101	7
8/16	Gardening Pollinators	7
8/30	Grow Pollinator Plants	8
9/4	Ecological Gardening	8
10/8	Sanctuaries: NH+VT	9
11/6	Invasives Management	9
11/20	Diversify Your Lawn	9
12/12	Aquatic Habitats of NE	9
1/7	Sanctuaries: ME	10
1/10	Plants 102	7
1/10	Designing Native Plants	7
1/14	Rain Garden Plants	10
1/28	Species Distribution	10
2/4	Intro Designing Natives	11
2/11	Plant Evolution, Part 1	11
2/26	Flora for Fauna	11
3/3	Floral Morphology	11

EASTERN MASSACHUSETTS

8/1	What to Propagate	27
8/8	Best Weeds	27
8/10	Botany in Salt Marsh	22
8/10	Hayward Brook Farm	33
8/10	Story Time	36
8/14	Adv. Plant Inventory	12
8/15	Botanical Inventory	12
8/21	Pollinators + Edibles	28
9/5	NE Vines and Climbers	13
9/8	Community Science	14
9/9	Field ID Techniques	14
9/11	Horticultural Tech.	28
9/13	Conserv. Through Use	14
9/17	Intro to Tree ID	15
9/17	Plant Form + Function	15
9/18	Asters + Goldenrods	15

9/20	Wetland ID + Delin.	16
9/21	Taunton Lecture	26
9/23	Native Plants/Profess.	29
9/25	Invasive Plants	16
9/27	Asters After Hours	5
10/4	Fall Wildflowers	16
10/5	Lyman Estate	34
10/9	Seed Conserv.: Part 1	17
10/10	Residential Landscape	29
10/11	Desert Memorial	24
10/18	Autumn Walk	25
10/19	Lichen Diversity	18
10/21	Native Woody Plants	29
10/23	Seed Conserv.: Part 2	17
10/23	Plant Ecology	18
11/1	Public Design	30
11/2	Plymouth Lecture	26
11/5	Back Bay Conserv.	35
11/7	Lawrence Lecture	26
11/8	Fungi Ecology	19
11/14	Prop. Semi-Hardwood	30
11/15	Plant Adaptations	30
11/19	Bare Trees	25
12/5	Seed Anatomy	19
12/6	Meadows 1-2-3	31
12/7	Shrubs in Winter	19
1/16	Book Club	6
1/23	Landscape for Life	31
1/29	Conservation Biology	20
1/30	Rare Plant Partners	20
1/31	Winter Botany	20
2/20	Reading Landscapes	26
2/21	Rare Plant Families	21
2/22	Visual Garden Design	31
2/26	Grafting Fruit Trees	32
2/27	Winter Pruning	32
2/28	Cultiv. Plant Comm.	32
2/29	Botany Story Slam	6
3/12	Predatory Plants	21

WESTERN MASSACHUSETTS

8/18	Seed Saving	28
9/5	Intro Aquatic Plants	13
9/7	Native Plant Dyes	13
9/7	Springfield Lecture	26
9/14	Understanding Soils	28
10/5	Greenfield Lecture	26
10/25	Framework Trees	18
11/6	Seed Conserv.: Part 3	17
11/16	Slow Gardening	30
1/23	Gardening for Climate	31

CONNECTICUT RHODE ISLAND

8/3	Meadows Tour	33
9/12	Artists' Trail	35
10/6	Botany of CT Coast	24
10/25	Design Symposium	5

MAINE NEW HAMPSHIRE VERMONT

8/11	Habitat Diversity: VT	23
8/24	Barrett Estate	34
9/15	Saco Heath	23
2/23	Winter Twig ID	21

CERTIFICATES IN

Whether you are interested in taking classes for fun, to add breadth and depth to your existing knowledge and skills, or to advance your career, our self-paced certificate programs in Native Plant Studies offer a unique opportunity to learn about the region's flora. Students enrolled in our certificate programs in Field Botany and Native Plant Horticulture and Design learn about identifying, cultivating, and conserving native New England plants while gaining a greater appreciation for their ecological importance. Students actively participate in ongoing public and private efforts to preserve and restore native New England flora. We offer programs for both Basic and Advanced certificates. To enter the Advanced program, students must complete the Basic Certificate or have enough experience to qualify for a Basic Certificate.

CERTIFICATE ORIENTATION WEBINAR

Watch this free webinar to learn about the curriculum and structure of the Native Plant Trust's certificate programs in Native Plant Studies.

Program Code: CER8000

FIELD BOTANY

Basic Curriculum

Eight Core Courses (all are required)

- Plant Form and Function
- Introduction to Plant Families
- New England Plant Communities
- Wildflowers of New England
- Framework Trees of New England
- Native New England Shrubs
- Field Identification Techniques
- Botanic Inventory Methods

Four Elective Classes

Four Botanical Field Studies

Fifteen Hours of Community Service

Students may volunteer with Native Plant Trust or with a native plant or plant conservation-oriented organization.

Advanced Curriculum

Five Core Courses (all are required)

- Conservation Biology
- New England Plant Diversity Sessions 1-5
- Advanced Plant Inventory Techniques
- Invasive Plants: Identification, Documentation, and Control
- Basic Wetland Identification and Delineation

Four Elective Classes

Three Botanical Field Studies

Two Plant Diversity Workshops

Twenty-five Hours of Community Service

Students must complete a Native Plant Community Service Leadership Project.

NATIVE PLANT STUDIES

ENROLL NOW!

Visit us online at www.NativePlantTrust.org/education to learn more. There is a one-time certificate enrollment fee of \$30. Join Native Plant Trust to receive discounts on programs.

CERTIFICATE CREDIT KEY

Most programs satisfy more than one requirement

FB=Field Botany basic

Adv.FB=Field Botany advanced

HD=Horticulture and Design basic

Adv.HD=Horticulture and Design advanced

Field=Botany or Horticulture field study

Core=Core Courses

Elective=Elective Classes

PDW=Design or Plant Diversity Workshop

Continuing Education Units (CEUs)

Many of our programs, including these in our certificate requirement, qualify for continuing education units.

Below is a list of CEUs we offer. Visit www.NativePlantTrust.org/education for a list of qualifying programs.

AOLCP - Northeast Organic Farming Association Accredited Organic Land Care Professionals

CFE - Society of American Foresters' Continuing Forestry Education

LACES - American Society of Landscape Architects' Continuing Education

MCA - Massachusetts Certified Arborist

MCH - Massachusetts Certified Horticulturist

MCLP - Massachusetts Certified Landscape Professional

HORTICULTURE AND DESIGN

Basic Curriculum

Nine Core Courses (all are required)

- Residential Landscape Design
- Horticultural Techniques
- Understanding and Managing Soils
- Plant Form and Function
- Wildflowers of New England
- Native Herbaceous Plant Materials: Early Season
- Native Herbaceous Plant Materials: Late Season
- Native Woody Plant Materials
- Native New England Shrubs

Four Elective Classes

Four Horticulture and Design Field Studies

Fifteen Hours of Community Service

Students may volunteer with the Society or with a native plant or plant conservation-oriented organization.

Advanced Curriculum

Four Core Courses (all are required)

- Landscape for Life
- Native Plants for Professionals
- New England Plant Communities
- Invasive Plants: Identification, Documentation, and Control

Four Elective Classes

Three Horticulture and Design Field Studies

Two Design Workshops

Twenty-five Hours of Community Service

Students must complete a Native Plant Community Service Leadership Project. Projects must benefit the community and further the Society's mission.

EVENTS

ASTERS AFTER HOURS

Enjoy harvest libations while listening to music on a beautiful autumn evening in the Garden. Stroll the Garden after hours to observe the season's stunning asters, goldenrods, and cardinal flowers in the evening glow. Learn about the plants used to create the event's featured beverages. Included with this event are Garden access, entertainment, learning opportunities, and light refreshments.

Friday, September 27, 2019, 6-8 p.m.
Garden in the Woods, Framingham, MA
Fee: \$23 (Members)/\$30 (Nonmembers)



New England aster (*Symphyotrichum novae-angliae*)

NATIVE PLANT DESIGN SYMPOSIUM

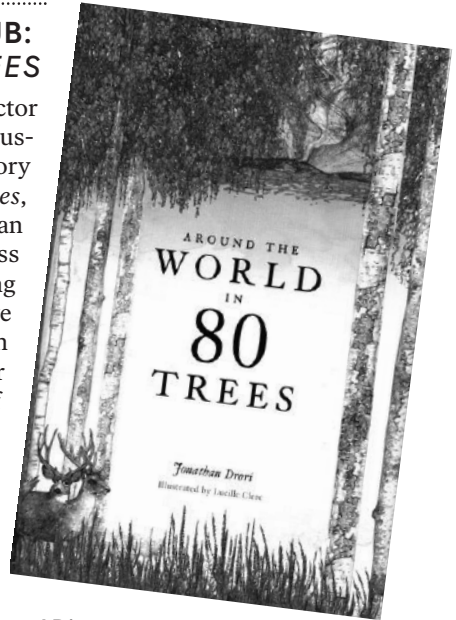
Join us for a day-long symposium addressing innovative ideas in native plant design and the ecosystems that support them, presented in partnership by Native Plant Trust and Audubon Society of Rhode Island. Through a keynote, panel, and workshops led by specialists in the field, the symposium addresses such topics as plant palettes, design styles, and assessing and working with site conditions. We will delve into landscapes through the lenses of public property, private property, and habitat creation. Appropriate for a wide spectrum of audiences, you will leave with new resources and new perspectives. Registration includes lunch. Register at www.NativePlantTrust.org and keep checking our website for the most up-to-date details.

Friday, October 25, 2019, 10 a.m.-5 p.m.
Rhode Island Audubon Nature Center, Bristol, RI
Program Code: SYM1007
Fee: \$86 (Members)/\$105 (Nonmembers)
Limit: 65
Certificate: Elective: all certificates
Cosponsor: Audubon Society of Rhode Island

EVENTS

NATIVE PLANT TRUST BOOK CLUB: *AROUND THE WORLD IN 80 TREES*

Join Courtney Allen, Native Plant Trust's Director of Public Programs, for an engaging group discussion about the impact of trees on human history and culture. *In Around the World in 80 Trees*, author and former Kew Gardens trustee Jonathan Drori leads us on a wild plant journey across continents with tales of self-mummifying monks, tree-climbing goats, and radioactive nuts. This program is sure to keep up the fun and momentum Drori started as our 2019 Arbor Day featured speaker! A limited number of signed copies are available for sale from the Garden shop. The program will also be available as an online discussion forum.



Thursday January 16, 2020, 2-4 p.m.

Garden in the Woods, Framingham, MA

Program Code: BKC1101

Instructor: Courtney Allen, landscape historian and Director of Public Programs, Native Plant Trust

Fee: \$15 (Members)/\$18 (Nonmembers)

Certificate: Elective: all certificates

TALES FROM THE FIELD: A BOTANY STORY SLAM

Join Native Plant Trust for an evening of plant adventure storytelling. Listen to some of the region's top botanists, horticulturists, and fellow plant geeks share their most riveting and hilarious tales from the field, then cast your vote for the night's best storyteller! This one-of-a-kind event will be moderated by Michael Piantedosi, Director of Conservation, with audience participation.

Saturday, February 29, 2020, 6-8 p.m.

Garden in the Woods, Framingham, MA

Fee: \$30 (Members)/\$36 (Nonmembers)

Limit: 100

ONLINE LEARNING

COURSES

Enjoy Native Plant Trust's rich educational programming wherever you are. Register now for one of our online courses on native plant botany, horticulture, and design.

PLANTS 101: INTRODUCTION TO THE GREEN WORLD

Explore New England's plant life in this online course. Learn what plants are, how they function, and why they are essential to all life on earth. The course introduces many of the region's native and non-native plants. You can complete the course at your own pace.

Class access begins Friday, August 16, 2019 and continues through Friday, November 15, 2019

Program Code: BOTO101

Fee: \$80 (Members)/\$98 (Nonmembers)

Certificate: Elective: FB/Adv.FB

GARDENING FOR POLLINATORS

This online course teaches how to convert a yard into productive pollinator habitat. Learn about issues associated with pollinator decline and current conservation efforts, then explore a variety of pollinators and the native plants that support their life cycles. The course also covers basic pollinator garden design and provides step-by-step instructions for selecting plants and installing and maintaining these habitats. You can complete the course at your own pace.

Class access begins Friday, August 16, 2019 and continues through Friday, November 15, 2019

Program Code: HORO101

Fee: \$80 (Members)/\$98 (Nonmembers)

Certificate: Elective: HD/Adv.HD

PLANTS 102: DEEPER INTO THE GREEN WORLD

Delve deeper into the New England flora in this online course. Learn how plants change as they grow; how they interact with other species; and how geology, soils, land use history, hydrology, and climate shape the plant communities of the region. Plants 101 is a foundation for Plants 102, but is not a prerequisite. You can complete the course at your own pace.

Class access begins Friday, January 10, 2020 and continues through Friday, April 10, 2020

Program Code: BOTO102

Fee: \$80 (Members)/\$98 (Nonmembers)

Certificate: Elective: FB/Adv.FB

DESIGNING WITH NATIVE PLANTS

This online course teaches the basics of designing with native plants and shows how to incorporate native plants into the garden and landscape. Discover the variety of native plants found throughout New England and learn how to design a visually interesting landscape that also supports biodiversity. You can complete the course at your own pace.

Class access begins Friday, January 10, 2020 and continues through Friday, April 10, 2020

Program Code: HORO100

Fee: \$80 (Members)/\$98 (Nonmembers)

Certificate: Elective: HD/Adv.HD

ONLINE LEARNING

WEBINARS

Join us for live webinars to learn about plant conservation, gardening, native plants, and more. Watch three live webinars to earn one elective class.

WOODLAND GARDENS BEYOND SPRING

Let's face it, woodland and other shade-heavy gardens peak in early spring, when ephemerals cover the ground, shrubs and small trees bloom, and wildflowers show off yellows, blues, pinks, and whites. How can we extend beauty and interest in these gardens throughout the rest of the growing season? From her years of experience practicing native plant horticulture at Garden in the Woods, Anna Fialkoff will provide insights into the successional staging of plants for colors, textures, nectar sources, and oomph into summer and fall.

Tuesday, August 6, 2019, 6-7 p.m.

Program Code: HORW344

Instructor: Anna Fialkoff, Senior Horticulturist, Native Plant Trust

Fee: \$12 (Members)/\$15 (Nonmembers)

Certificate: Elective: HD/Adv.HD

GROWING POLLINATOR-FRIENDLY PLANTS FROM SEED

Learn how to grow the top New England plants for pollinators from seed. The fates of native plants and pollinators are intricately interwoven; both are essential to the environment. Growing from seed is an affordable solution for creating pollinator habitat in a home gardener's yard. This class covers all information needed to raise these pollinator powerhouses.

Friday, August 30, 2019, 1-2 p.m.

Program Code: HORW212

Instructor: Kate Stafford, horticulturist

Fee: \$12 (Members)/\$15 (Nonmembers)

Certificate: Elective: HD/Adv.HD

ECOLOGICAL GARDENING

Wondering when to cut back perennials and how long into autumn perennials, trees, and shrubs can be planted or pruned? Want to know about the most wildlife-friendly approach? Anna Fialkoff explains how to transition a garden into winter dormancy while balancing winter and spring preparation, beauty, and wildlife value.

Wednesday, September 4, 2019, 6-7 p.m.

Program Code: HORW343

Instructor: Anna Fialkoff, Senior Horticulturist, Native Plant Trust

Fee: \$12 (Members)/\$15 (Nonmembers)

Certificate: Elective: HD/Adv.HD

NE American-aster (*Symphotrichum novae-angliae*)



ONLINE LEARNING

SANCTUARY UPDATES: NEW HAMPSHIRE AND VERMONT

Native Plant Trust owns and manages three plant sanctuaries in Vermont and New Hampshire: Eshqua Bog, Plainfield Sanctuary, and Hobbs Fern Sanctuary. Each of these sanctuaries is ecologically unique, with outstanding botanical resources. Native Plant Trust's Ecological Programs Coordinator Bud Sechler offers in-depth property updates on the management of each site, the ecological priorities for each, and exciting findings from the field excursions.

Tuesday, October 8, 2019, 1-2 p.m.

Program Code: BOTW402

Instructor: Bud Sechler, Ecological Programs Coordinator, Native Plant Trust

Fee: \$12 (Members)/\$15 (Nonmembers)

Certificate: Elective: FB/Adv.FB

STRATEGIES FOR INVASIVE PLANTS MANAGEMENT

Invasive plants continue to be one of the main threats to the ecological integrity of natural communities and to populations of rare plants. Native Plant Trust's Ecological Programs Coordinator Bud Sechler examines different strategies to combat invasive plants, drawing on invasive plant management experiences with Native Plant Trust, Massachusetts Invasive Plant Advisory Group, and the Sudbury-Assabet-Concord Watershed Cooperative Invasive Species Management Area.

Wednesday, November 6, 2019, 1-2 p.m.

Program Code: BOTW901

Instructor: Bud Sechler, Ecological Programs Coordinator, Native Plant Trust

Fee: \$12 (Members)/\$15 (Nonmembers)

Certificate: Elective: FB/Adv.FB



Plantain-leaved sedge (*Carex plantaginifolia*)

DIVERSIFY YOUR LAWN

Who says lawns need to be monocultures or only made of grasses? Enrich the traditional lawn with complementary plants that bloom at different times and add intrigue. Learn how to identify the plants that already grow in lawn as “weeds,” and to incorporate new plants that create a rich, wildlife-friendly tapestry.

Wednesday, November 20, 2019, 6-7 p.m.

Program Code: HORW110

Instructor: Anna Fialkoff, Senior Horticulturist, Native Plant Trust

Fee: \$12 (Members)/\$15 (Nonmembers)

Certificate: Elective: HD/Adv.HD

AQUATIC HABITATS OF THE NORTHEAST

Learn about aquatic plants and the amazing adaptations that enable them to live their lives almost entirely underwater. Visit lakes, streams, and other wet places to explore the native and invasive inhabitants of our waterways.

Thursday, December 12, 2019, 1-2 p.m.

Program Code: BOTW506

Instructor: Lori Benoit, wetland scientist and environmental consultant

Fee: \$12 (Members)/\$15 (Nonmembers)

Certificate: Elective: FB/Adv.FB

ONLINE LEARNING

SANCTUARY UPDATES: MAINE

Native Plant Trust owns and manages four plant sanctuaries in Maine: Annie Sturgis Sanctuary, Robert P. Tristram Coffin Wild Flower Sanctuary, Harvey Butler Rhododendron Sanctuary, and Wayne Bog. Each of these sanctuaries is ecologically unique, with outstanding botanical resources. Native Plant Trust's Ecological Programs Coordinator Bud Sechler offers in-depth property updates on the management of each site, the ecological priorities for each, and exciting findings from the field excursions.

Tuesday, January 7, 2020, 1-2 p.m.

Program Code: BOTW403

Instructor: Bud Sechler, Ecological Programs Coordinator, Native Plant Trust

Fee: \$12 (Members)/\$15 (Nonmembers)

Certificate: Elective: FB/Adv.FB

RAIN GARDEN PLANTS

Rain gardens can reduce groundwater pollution in urban landscapes by cleaning, cooling, and slowing stormwater. Learn how to maximize rain garden function by using the most durable native plants in some of the toughest spots.

Tuesday, January 14, 2020, 1-2 p.m.

Program Code: HORW211

Instructor: Anna Fialkoff, Senior Horticulturist, Native Plant Trust

Fee: \$12 (Members)/\$15 (Nonmembers)

Certificate: Elective: HD/Adv.HD

INTRODUCTION TO SPECIES DISTRIBUTION MODELING

Modeling species distributions has become essential to identifying which areas to protect in order to effectively conserve a given species now and into the future. During this program, we will explore niche development and environmental envelopes and learn how they can be used to predict what areas are best suited as habitat for a given species. The program will conclude by looking at the different applications of species distribution models to help conserve species and predict future threats.

Tuesday, January 28, 2020, 1-2 p.m.

Program Code: BOTW902

Instructor: Micah Jasny, Botanical Coordinator, Native Plant Trust

Fee: \$12 (Members)/\$15 (Nonmembers)

Certificate: Elective: FB/Adv.FB

Cardinal-flower (*Lobelia cardinalis*)



ONLINE LEARNING

INTRODUCTION TO DESIGNING WITH NATIVE PLANTS

Although most often associated with natural settings such as meadows, forests, and pond edges, native plants can work beautifully in built landscapes. Learn which native plants work best for gardens and what principles of design enhance their aesthetic appeal.

Tuesday, February 4, 2020, 1-2 p.m.

Program Code: HORW210

Instructor: Anna Fialkoff, Senior Horticulturist, Native Plant Trust

Fee: \$12 (Members)/\$15 (Nonmembers)

Certificate: Elective: HD/Adv.HD

PLANT EVOLUTION, PART 1

In this webinar, you will learn current knowledge and theories for early plant evolution. We'll review the evidence for plant evolution including fossils, DNA, and morphology to understand how photosynthetic organisms from ancient seas evolved and adapted to life on land.

Tuesday, February 11, 2020, 1-2 p.m.

Program Code: BOTW312

Instructor: Lori Benoit, wetland scientist and environmental consultant

Fee: \$12 (Members)/\$15 (Nonmembers)

Certificate: Elective: all certificates



FLORA FOR FAUNA

This webinar addresses the human need to interact with wild plants on the regional landscape. When done in accordance with reciprocal conservation methods, both parties (humans and plants) benefit from the interaction. In many circumstances, reciprocal conservation has merit and is the historical practice humans have used to steward wild plant populations and their health.

Wednesday, February 26, 2020, 1-2 p.m.

Program Code: BOTW515

Instructor: Arthur Haines, Research Botanist, Native Plant Trust, author of *Flora Novae Angliae*

Fee: \$12 (Members)/\$15 (Nonmembers)

Certificate: Elective: all certificates

FLORAL MORPHOLOGY

This introductory webinar familiarizes you with a working vocabulary of floral parts and with the skills to accurately describe their position, fusion, numbers, absence, and other features used in taxonomy to identify and classify plants. Take the first step to correctly interpreting structures we see on plants and understanding how they allow for plant classification.

Tuesday, March 3, 2020, 1-2 p.m.

Program Code: BOTW201

Instructor: Arthur Haines, Research Botanist, Native Plant Trust, author of *Flora Novae Angliae*

Fee: \$12 (Members)/\$15 (Nonmembers)

Certificate: Elective: all certificates

BOTANY + CONSERVATION



ADVANCED PLANT INVENTORY TECHNIQUES

This course covers the procedures and techniques for conducting a botanical inventory on conservation land. Following an evening session of reviewing research and sampling strategies, we spend a full day in the field inventorying the vascular plants on an ecologically diverse site. On the second evening, we review our results, identify plants that were puzzling in the field, and compile a complete list of our findings. This course is designed for students who have taken Native Plant Trust's Botanical Inventory Methods course.

Wednesday, August 14, 6:30-8:30 p.m.;
Saturday, August 17, 10 a.m.-3 p.m.;
Wednesday, August 21, 2019,
6:30-8:30 p.m.

Garden in the Woods, Framingham, MA and field sites

Program Code: BOT2055

Instructor: Ted Elliman, botanist and author of *Wildflowers of New England*

Fee: \$138 (Members)/\$162 (Nonmembers)

Limit: 16

Certificate: Core: Adv.FB; Elective: HD/Adv.HD

BOTANICAL INVENTORY METHODS

Learn botanical survey tools and methods for inventorying the flora of a conservation property. The evening session covers the basics of field preparation using a variety of maps, field guides, aerial photography, GPS units, field supplies, and data sheets. Then spend a full day in the field putting the methods into practice. Bring a bag lunch, compass, hand lens, and GPS unit if you have one.

Thursday, August 15, 6:30-8:30 p.m. and Sunday, August 18, 2019,
10 a.m.-2 p.m.

Garden in the Woods, Framingham, MA
Program Code: BOT2050

Instructor: Ted Elliman, botanist and author of *Wildflowers of New England*

Fee: \$108 (Members)/\$132 (Nonmembers)

Limit: 16

Certificate: Core: FB

BOTANY + CONSERVATION

INTRODUCTION TO AQUATIC PLANTS OF NEW ENGLAND

Aquatic habitats of the Northeast support a high diversity of plants. Learn how to identify local native and invasive aquatic plants through hands-on review of vegetative and floral characteristics. Discover the amazing adaptations plants have made to live in water.

Thursdays, September 5, 12, 2019, 6-9 p.m.

Nasami Farm, Whately, MA

Program Code: WET1005

Instructor: Lori Benoit, wetland scientist and environmental consultant

Fee: \$90 (Members)/\$108 (Nonmembers)

Limit: 16

Certificate: Elective: all certificates

Cosponsor: Massachusetts Association of Conservation Commissions

NATIVE NEW ENGLAND VINES AND CLIMBERS

Vines and climbers are an ecologically important and varied group of plants in New England. Learn about 50 native climbers that vary widely in size, form, leaves, flowers, fruit, and complex adaptations to aid their climbing habit. Become familiar with identifying characteristics. Bring a hand lens.

Thursdays, September 5, 12, and Sunday, September 22, 2019, 10:30 a.m.-2:30 p.m.

Garden in the Woods, Framingham, MA and field site

Program Code: BOT3020

Instructor: Neela de Zoysa, botanist

Fee: \$180 (Members)/\$216 (Nonmembers)

Limit: 20

Certificate: Elective: all certificates



White water-lily (*Nymphaea odorata*)

NATIVE PLANTS FOR NATURAL DYES

This program will explore the methodology of dyeing fibers using native and naturalized plant species. Through lecture materials, we will cover the basics of dyeing in ethnobotany, plant chemistry, and concepts of sustainable use. We will go into the field to identify and collect some plant material, and then go through the process of mordanting and dyeing raw wool, cotton, and silk fibers.

Saturday, September 7, 2019, 10 a.m.-5 p.m.

Nasami Farm, Whately, MA

Program Code: ART2700

Instructor: Yoni Glogower, urban forester, MA DCR, and Mary Jones, naturalist and community organizer

Fee: \$105 (Members)/\$126 (Nonmembers)

Limit: 20

BOTANY + CONSERVATION

"WHAT CAN I DO?": THE EVOLVING ROLE OF COMMUNITY SCIENCE IN CONSERVATION

Community science is the engagement of passionate members of the general public, often with little or no previous training, in the advancement of scientific knowledge and discovery. As environmental threats to our natural world mount, community science has become critical to collecting and analyzing data to help make conservation decisions. Come and learn about the history of community science, how Native Plant Trust utilizes community science, and the impacts you can have as a community scientist.

**Sunday, September 8, 2019,
10:30 a.m.-12 p.m.**

**Garden in the Woods, Framingham, MA
Program Code: BOT1512**

**Instructor: Micah Jasny, Botanical
Coordinator, Native Plant Trust**

Fee: \$23 (Members)/\$27 (Nonmembers)

Limit: 30

Certificate: Elective: all certificates

**Cosponsor: Massachusetts Association of
Conservation Commissions**



FIELD IDENTIFICATION TECHNIQUES

Equip yourself with the skills and confidence you need to identify native plants in the field. Learn how to use field guides and professional keys, observe floral structures, recognize reliable family characteristics, and become familiar with botanical Latin. This course is designed for students who have taken Native Plant Trust's Wildflowers of New England course or have some previous experience identifying wildflowers.

**Mondays, September 9, 16, 23, 2019,
1-5 p.m.**

**Garden in the Woods, Framingham, MA
Program Code: BOT2008**

Instructor: Leslie Duthie, botanist

Fee: \$184 (Members)/\$218 (Nonmembers)

Limit: 16

Certificate: Core: FB; Elective: HD/Adv.HD

CONSERVATION THROUGH USE

Humans are increasingly disconnected from wild places due to the overuse of land and the exclusion of human activity from some conservation areas. Join Director of Conservation Michael Piantedosi for a talk about how human interaction with wildlife and wildlands can actually support conservation goals.

**Friday, September 13, 2019,
11 a.m.-2 p.m.**

**Garden in the Woods, Framingham, MA
Program Code: BOT5132**

**Instructor: Michael Piantedosi, Director of
Conservation, Native Plant Trust**

Fee: \$40 (Members)/\$48 (Nonmembers)

Limit: 16

Certificate: Elective: FB/Adv.FB

**Cosponsor: Massachusetts Association of
Conservation Commissions**

BOTANY + CONSERVATION

INTRODUCTION TO TREE IDENTIFICATION

“I think that I shall never see/ A poem lovely as a tree.” Trees are the beautiful, dominant flora in New England. This course will introduce you to 25-30 common New England trees, emphasizing tree ID as well as natural history. Bring a hand lens and a bag lunch. The first class will be held at Garden in the Woods, the second at a field site.

**Tuesday, September 17 and
Thursday, September 19, 2019,
10:30 a.m.-2:30 p.m.**

**Garden in the Woods, Framingham, MA,
and field site**

Program Code: BOT3260

**Instructor: Roland “Boot” Boutwell,
naturalist**

Fee: \$120 (Members)/\$144 (Nonmembers)

Limit: 16

Certificate: Elective: FB/Adv.FB

PLANT FORM AND FUNCTION

This introduction to botany covers the basics of plant anatomy and physiology and addresses the fundamentals of the plant kingdom through slides and live materials. Microscopic study provides a close look at roots, stems, leaves, and their component tissues. Participants examine flowers, fruits, and seeds and discuss pollination, fertilization, dispersal, and germination, with an emphasis on the relationship between plant form and function.

**Tuesdays, September 17, 24, October 1, 8,
15, 22, 2019, 6:30 p.m.-9 p.m.**

Garden in the Woods, Framingham, MA

Program Code: BOT1000

**Instructor: Nancy M. Eyster-Smith, Ph.D.,
botanist**

Fee: \$270 (Members)/\$330 (Nonmembers)

Limit: 16

Certificate: Core: FB/HD

ASTERS AND GOLDENRODS

Learn to identify approximately 40 species of asters and goldenrods. The evening session will include a PowerPoint program, examination of herbarium specimens, and discussion of keys for aster and goldenrod identification. The Saturday field session will include observations of species in the Garden and in a variety of natural habitats in town conservation land.

**Wednesday, September 18, 6:30-8:30 p.m.
and Saturday, September 21, 2019, 10
a.m.–3 p.m.**

**Garden in the Woods, Framingham, MA,
and Barber Reservation, Sherborn, MA**

Program Code: PDW4400

**Instructor: Ted Elliman, botanist and
author of *Wildflowers of New England***

Fee: \$105 (Members)/\$126 (Nonmembers)

Limit: 16

Certificate: Elective: all certificates



Axillary goldenrod (*Solidago caesia*)

BOTANY + CONSERVATION

BASIC WETLAND IDENTIFICATION AND DELINEATION

This two-day course introduces the principal elements of wetland identification, including wetland hydrology, hydric soils, and hydrophytic plants. We identify plants in the field, place a delineation line, and utilize web resources. Recommended gear includes a field notebook, field guides, soil color charts, an auger, and rainwear. Bring a bag lunch.

Friday, September 20 and Saturday, September 21, 2019, 9:30 a.m.-4:30 p.m.

Garden in the Woods, Framingham, MA

Program Code: WET2010

Instructor: William E. Kuriger, botanist

Fee: \$216 (Members)/\$254 (Nonmembers)

Limit: 16

Certificate: Core: Adv.FB; Elective: HD/Adv.HD

INVASIVE PLANTS: IDENTIFICATION, IMPACTS, AND MANAGEMENT

This class will cover identification, impacts, and control of many of the invasive plant species that are an unwelcome but persistent presence in forests, fields, and wetlands. The evening session will include a PowerPoint presentation and a close examination of herbarium specimens of many invasives found in New England. The field study will examine the impacts of some of these species and discuss methods for managing invasive plant populations.

Wednesday, September 25, 6:30-8:30 p.m. and Saturday, September 28, 2019, 10 a.m.-2 p.m.

Garden in the Woods, Framingham, MA, and field site

Program Code: BOT5130

Instructor: Ted Elliman, botanist and author of *Wildflowers of New England*
Fee: \$108 (Members)/\$132 (Nonmembers)

Limit: 16

Certificate: Core: Adv.FB/Adv.HD

FALL WILDFLOWERS, FRUIT, AND FOLIAGE

Fall is a time of intense activity for plants. Asters and goldenrods provide a last burst of color, and insect pollinators abound. Learn to identify seasonal wildflowers and spring-flowering plants in fruit. Through classroom instruction and a walk in the Garden, you will learn the science behind plants' preparation for winter. Bring a hand lens and *Wildflowers of New England*.

Friday, October 4, 2019, 10:30 a.m.-2:30 p.m.

Garden in the Woods, Framingham, MA

Program Code: BOT3018

Instructor: Neela de Zoysa, botanist

Fee: \$60 (Members)/\$72 (Nonmembers)

Limit: 16

Certificate: Elective: FB

Cosponsor: Massachusetts Association of Conservation Commissions



Maple-leaved viburnum (*Viburnum acerifolium*)

BOTANY + CONSERVATION

SEED CONSERVATION

Seed banking, or ex situ conservation, is an effective method of conserving our rare and endangered flora for future generations. Join Michael Piantedosi as we explore the process of procuring, cleaning, and accessioning seeds in a seed bank. We will focus on this process in three parts: seed collection (part 1), seed cleaning and processing (part 2), and seed storage for indefinite freezing at 0°F (part 3). This course is suitable for professional conservationists as well as those interested in peeking behind the curtain at Native Plant Trust's regional seed bank. These classes are recommended as a series, and the first session is a prerequisite for the following two.

Milkweed (*Asclepias* spp.)



PART 1: COLLECTION

Wednesday, October 9, 2019,
10:30 a.m.-1:30 p.m.

Garden in the Woods, Framingham, MA

Program Code: BOT5133

Instructor: Michael Piantedosi, Director
of Conservation, Native Plant Trust

Fee: \$45 (Members)/\$54 (Nonmembers)

Limit: 12

Certificate: Elective: FB/Adv.FB

PART 2: PROCESSING

Wednesday, October 23, 2019,
10:30 a.m.-1:30 p.m.

Garden in the Woods, Framingham, MA

Program Code: BOT5134

Instructor: Michael Piantedosi, Director
of Conservation, Native Plant Trust

Fee: \$45 (Members)/\$54 (Nonmembers)

Limit: 12

Certificate: Elective: FB/Adv.FB

PART 3: STORAGE

Wednesday, November 6, 2019,
10:30 a.m.-1:30 p.m.

Nasami Farm, Whately, MA

Program Code: BOT5135

Instructor: Michael Piantedosi, Director
of Conservation, Native Plant Trust

Fee: \$45 (Members)/\$54 (Nonmembers)

Limit: 12

Certificate: Elective: FB/Adv.FB

BOTANY + CONSERVATION

LICHEN DIVERSITY

This class begins with a morning in which you compare lichen collections to study the features that distinguish species. An afternoon visit to a local site offers an opportunity to observe the diversity of lichens commonly found growing on rock walls and learn about the factors that influence lichen colonization and growth.

**Saturday, October 19, 2020,
10:30 a.m.-3:30 p.m.**

Garden in the Woods, Framingham, MA,
and Sudbury Center cemeteries

Program Code: BOT3629

Instructor: Elizabeth Kneiper, lichenologist

Fee: \$75 (Members)/\$90 (Nonmembers)

Limit: 16

Certificate: Elective: FB/Adv.FB

BASIC PLANT ECOLOGY FOR CONSERVATION

This course offers an overview of the study of plant ecology—the distribution and abundance of plants and their interactions with other organisms and the physical environment. Topics include factors that affect plants as individuals, populations, and communities, such as life history, resource use, competition, and animal-plant interactions (e.g., pollination, dispersal, and herbivory).

**Wednesdays, October 23, 30, November
6, 2019, 6:30-8:30 p.m.**

Garden in the Woods, Framingham, MA

Program Code: BOT1003

Instructor: Patricia Swain Rice, natural
community ecologist

Fee: \$90 (Members)/\$108 (Nonmembers)

Limit: 30

Certificate: Elective: FB/Adv.FB

Cosponsor: Massachusetts Association of
Conservation Commissions

FRAMEWORK TREES OF NEW ENGLAND

Forests are a dominant feature of the New England landscape. This course covers the history, changes in composition, and ecology of the region's forests from the Ice Age through European settlement. Learn to identify native trees, their habitats, and their communities. Explore the impact of past natural and human disturbances on the landscape and discover how current forestry practices shape forest communities.

**Friday, October 25 and Saturday, October
26, 2019, 10 a.m.-5 p.m.**

Nasami Farm, Whately, MA, and field sites

Program Code: BOT3200

Instructor: Yoni Glogower, urban forester,
MA DCR

Fee: \$252 (Members)/\$308 (Nonmembers)

Limit: 16

Certificate: Core: FB; Elective: all
certificates

Cosponsor: Massachusetts Association of
Conservation Commissions



Striped maple (*Acer pensylvanicum*)

BOTANY + CONSERVATION

FUNGI ECOLOGY AND RELATIONSHIPS

Fungi are essential to our planet's health. In this class, mycologist Lawrence Millman discusses fungal ecology and the symbiotic relationships between fungi and plants—known as mycorrhizae. We will explore three types of mycorrhizae: ectomycorrhizal, endomycorrhizal, and ericoid. After the presentation, we will examine examples of these relationships throughout the Garden.

Friday, November 8, 2019, 1-4 p.m.

Garden in the Woods, Framingham, MA

Program Code: BOT3804

Instructor: Lawrence Millman, mycologist, author of *Fungipedia*

Fee: \$45 (Members)/\$54 (Nonmembers)

Limit: 16

Certificate: Elective: all certificates

SEED ANATOMY: BEAUTY AND FUNCTION

Seeds are a gateway to another dimension. Join Michael Piantedosi as we journey to the level of the humble, often-overlooked seed. We will focus on seed anatomy and function, with discussion of the relevant terminology for these intricate structures. In addition, we will explore the exceptional beauty of some seeds and the function behind their architecture.

Thursday, December 5, 2019, 1-4 p.m.

Garden in the Woods, Framingham, MA

Program Code: BOT6038

Instructor: Michael Piantedosi, Director of Conservation, Native Plant Trust

Fee: \$45 (Members)/\$54 (Nonmembers)

Limit: 16

Certificate: Elective: all certificates

SHRUBS IN WINTER

Even without leaves, most shrubs are easily recognizable in winter. Learn to identify 20 native New England shrubs through such characteristics as branching patterns, bark, persistent flowers and fruits, growth forms, galls, and habitats. We begin indoors looking at twig samples and slides, then head out into the Garden for a close look at our subjects. We will also consider the natural history of these shrubs and finish indoors with a twig quiz. Bring lunch and a hand lens.

Saturday, December 7, 2019, 10 a.m.-2 p.m.

Garden in the Woods, Framingham, MA

Program Code: WET3020

Instructor: Roland "Boot" Boutwell, naturalist

Fee: \$60 (Members)/\$72 (Nonmembers)

Limit: 16

Certificate: Elective: FB/Adv.FB

Cosponsor: Massachusetts Association of Conservation Commissions



Highbush blueberry (*Vaccinium corymbosum*)

BOTANY + CONSERVATION

CONSERVATION BIOLOGY

This introduction to conservation biology and biodiversity covers the factors that make a species vulnerable to extinction and the strategies and tools that can be used to protect plants and ecosystems. The course explores the interdisciplinary nature of conservation biology through readings, group exercises, and video clips. Participants receive a bibliography of resources for further study. Bring a bag lunch.

Wednesdays, January 29, February 5, 12, 2020, 10:30 a.m.-4 p.m.

Garden in the Woods, Framingham, MA
Program Code: BOT5100

Instructor: Nancy M. Eyster-Smith, Ph.D.,
botanist

Fee: \$297 (Members)/\$363 (Nonmembers)
Limit: 16

Certificate: Core: Adv.FB; Elective: FB

PARTNERSHIPS FOR RARE PLANT MANAGEMENT

For Natural Heritage programs and their partners, tracking rare plant populations is challenging due to lack of resources, personnel, and feasibility. Ecological Programs Coordinator Bud Sechler explains Native Plant Trust's process of prioritizing management projects with Natural Heritage programs in each New England state and provides examples of ongoing collaborations. We will discuss ways to improve the management of rare plant populations.

Thursday, January 30, 2020, 1-2 p.m.

Garden in the Woods, Framingham, MA
Program Code: BOT8310

Instructor: Bud Sechler, Ecological
Programs Coordinator, Native Plant Trust

Fee: \$15 (Members)/\$18 (Nonmembers)
Limit: 30

Certificate: Elective: FB/Adv.FB

Cosponsor: Massachusetts Association of
Conservation Commissions

WINTER BOTANY

Investigate the taxonomic characteristics of deciduous, evergreen, and some herbaceous plants in winter. You will learn to use a dichotomous key and then identify a large inventory of twig and plant specimens before heading outdoors to practice these skills in the Garden's living collection. Bring a bag lunch, a hand lens, and a copy of *Fruit Key and Twig Key to Trees and Shrubs* by William M. Harlow. Take home plant specimens.

Friday, January 31, 2020,
9:30 a.m.-3:30 p.m.

Garden in the Woods, Framingham, MA
Program Code: BOT3317

Instructor: William E. Kuriger, botanist

Fee: \$90 (Members)/\$108 (Nonmembers)
Limit: 20

Certificate: Elective: FB/Adv.FB



Great rosebay (*Rhododendron maximum*)

BOTANY + CONSERVATION

RARE PLANT FAMILIES

Where have all the flowers gone? Many are in decline, and some more than others. In this class, we will gain a better understanding of the most threatened New England plant families. From the orchids to the moonworts, we will assess the varied effects of conservation concern on several plant families. In addition, we will discuss actions that Native Plant Trust and conservationists in the region are conducting to protect the taxa most in need.

Friday, February 21, 2020, 1-4 p.m.

Garden in the Woods, Framingham, MA
Program Code: BOT2270

Instructor: Michael Piantedosi, Director of Conservation, Native Plant Trust

Fee: \$45 (Members)/\$54 (Nonmembers)

Limit: 16

Certificate: Elective: all certificates

Cosponsor: Massachusetts Association of Conservation Commissions

PREDATORY PLANTS

Insectivorous and parasitic plants have evolved nutritional modes that are unlike the rest of the plant world, where self-sufficiency is the norm. This class covers more familiar pitcher plants, sundews, and dodder vines as well as lesser known groups such as the bladderworts and broom rapes. Learn about the habitats, unusual life cycles, and curious behavior of these New England plants.

Thursday, March 12, 2020,
10:30 a.m.-2:30 p.m.

Garden in the Woods, Framingham, MA
Program Code: BOT2317

Instructor: Neela de Zoysa, botanist

Fee: \$60 (Members)/\$72 (Nonmembers)

Limit: 16

Certificate: Elective: all certificates

WINTER TWIG IDENTIFICATION

Woody plants such as trees, shrubs, and lianas can be identified during dormant time. Winter branchlet identification provides a more holistic understanding of woody plant identification and can give you more confidence in naming plants. You will learn to interpret the special branchlet features of woody plants that assist both in winter identification as well as in growing season surveys.

Sunday, February 23, 2019, 1-4 p.m.

Gilsland Farm Audubon Center,
Falmouth, ME

Program Code: BOT3332

Instructor: Arthur Haines, Research Botanist, Native Plant Trust, author of *Flora Novae Angliae*

Fee: \$45 (Members)/\$54 (Nonmembers)

Limit: 30

Certificate: Elective: FB/Adv.FB

Cosponsor: Maine Audubon

Swamp moonwort (*Botrychium tenebrosum*) © Arthur Haines



BOTANY + CONSERVATION FIELD STUDIES

Nothing beats the experience of seeing native plants in their natural environments. These expert-led excursions provide unique access to varied habitats and unusual native plants.

FIELD STUDY DIFFICULTY RATING

Easy

The hike covers mostly level ground and possibly a few gentle hills; walking surfaces are relatively smooth. Easy hikes are generally suitable for anyone who enjoys walking.

Easy/moderate

The hike is not flat, but the elevation gain is less than 500 feet per mile. Hikers should be prepared for some gentle uphill walking and possibly a few short, steeper sections.

Moderate

The hike ascends at a steady incline, usually 500-800 feet per mile, which would be unsuitable for someone not accustomed to hiking.

Moderate/difficult

The hike is challenging, with an average elevation gain of 500-800 feet per mile and some steeper sections or rougher walking conditions. This designation also describes hikes that are quite steep but relatively short.

Difficult

The hike features steep inclines and rough footing or rock scrambles. The gain in elevation averages more than 800 feet per mile and frequently reaches or exceeds 1,000 feet or more per mile.

BOTANY IN THE SALT MARSH

Barnstable Great Marsh is an integral part of the ecologically significant 3,800-acre Sandy Neck salt marsh and barrier beach system. Join Michael Piantedosi to explore this critical coastal ecosystem and learn about its resident flora.

Habitat: salt marsh, coastal

Known for: 3,800-acre salt marsh ecosystem and Sandy Neck

Difficulty: easy/moderate

Saturday, August 10, 2019, 10 a.m.-1 p.m.

Barnstable Great Marsh Wildlife Sanctuary, Barnstable, MA

Program Code: FDT8041

Instructor: Michael Piantedosi, Director of Conservation, Native Plant Trust

Fee: \$28 (Members)/\$35 (Nonmembers)

Limit: 16

Certificate: Field: FB/Adv.FB



Barnstable Great Marsh Wildlife Sanctuary

BOTANY + CONSERVATION FIELD STUDIES

HABITAT DIVERSITY: MONTPELIER

Join us for an exploration of North Branch Nature Center's expansive property, located on 28 acres in Vermont's capital. This class offers you a hands-on opportunity to examine the biological diversity of habitats ranging from meadows to wetlands to forests and learn how they create and contribute to an overarching ecosystem. Please come prepared to spend most of the time outdoors.

Habitat: meadow, wetland, forest

Known for: habitat diversity

Difficulty: easy/moderate

Sunday, August 11, 2019, 1-4 p.m.
North Branch Nature Center, Montpelier, VT

Program Code: FDT1201

Instructor: Aaron Marcus, botanist,
Vermont Fish & Wildlife

Fee: \$28 (Members)/\$35 (Nonmembers)

Limit: 16

Certificate: Field: FB/Adv.FB

Cosponsor: North Branch Nature Center

SACO HEATH

Saco Heath was created when two adjacent kettle-hole ponds filled with decaying plant matter called peat. Eventually, the two ponds filled completely and grew together to form a raised coalesced bog, where the surface of the peat is perched above the level of the groundwater. The 1,223-acre preserve is one of the southernmost examples of this peatland type. Bring a hand lens and a bag lunch.

Habitat: raised bog

Known for: Labrador tea, leatherleaf,
rhodora

Difficulty: easy

Sunday, September 15, 2019,
10 a.m.-2 p.m.

Saco, ME

Program Code: FDT3011

Instructor: Roland "Boot" Boutwell,
naturalist

Fee: \$48 (Members)/\$60 (Nonmembers)

Limit: 16

Certificate: Field: FB/Adv.FB



Labrador-tea (*Rhododendron groenlandicum*)

BOTANY + CONSERVATION FIELD STUDIES

BOTANY OF THE CONNECTICUT COAST

Explore the special coastal habitats of the 900-acre Hammonasset Beach State Park and Natural Area Preserve to learn the flora and ecology of tidal marsh, dune, and near-shore upland habitats. Participants also visit a tidal marsh restoration site within the park.

Habitat: coastal beach/dune, tidal marsh, estuary

Known for: more than 600 acres of salt and brackish tidal marshes

Difficulty: easy/moderate

Sunday, October 6, 2019, 12:30-3:30 p.m.

Hammonasset Beach State Park,
Madison, CT

Program Code: FDT8050

Instructor: Lori Benoit, Ph.D., wetland scientist and environmental consultant

Fee: \$36 (Members)/\$45 (Nonmembers)

Limit: 16

Certificate: Field: FB/Adv.FB

THE DESERT MEMORIAL FOREST RESERVATION

This 615-acre area is known as The Desert because of its well-drained sandy soils, which were originally deposited by glacial activity. The soils support an unusual patch of pitch pine and scrub oak in the midst of forest, wetlands, and waterways. Come observe the special features of this habitat and the abundance of food for wildlife, as well as the surrounding forests and wetlands. Learn about the restoration efforts of this unique area.

Habitat: forests and wetlands

Known for: pitch pine/scrub oak

Difficulty: easy

**Friday, October 11, 2019,
10:30 a.m.-2:30 p.m.**

Desert Natural Area, Memorial Forest,
Sudbury, MA

Program Code: FDT8053

Instructor: Neela de Zoysa, botanist

Fee: \$48 (Members)/\$60 (Nonmembers)

Limit: 16

Certificate: Field: FB/Adv.FB

Hammonasset Beach State Park and Natural Preserve



BOTANY + CONSERVATION FIELD STUDIES

AN AUTUMN WALK THROUGH MEADOW AND FOREST

Diverse habitats mean diverse plants. This field study begins at the last working farm in Winchester, MA, and ranges through meadows and meadow edges, ponds and pond edges, an upland forest, and the highest point in Lexington, MA, where we encounter pitch pine, scrub oak, and bearberry. The walk will focus on plant ID and natural history.

Habitat: meadow, pond edge, upland forest

Known for: extensive plant variety

Difficulty: easy/moderate

Friday, October 18, 2019, 10 a.m.-2 p.m.

Wright-Locke Farm, Winchester, MA

Program Code: FDT8051

Instructor: Roland "Boot" Boutwell, naturalist

Fee: \$48 (Members)/\$60 (Nonmembers)

Limit: 16

Certificate: Field: FB/Adv.FB

Cosponsor: Massachusetts Association of Conservation Commissions

BARE TREES AND NAKED SHRUBS

No leaves? No problem! We use a combination of branching patterns, bud and bark characteristics, habitat, persistent fruits, galls, and marcescent leaves to help us identify woody plants in winter. At the sanctuary, we take a close look at 15-20 common trees and shrubs in their natural habitat. The program will conclude indoors with a twig quiz. Bring lunch and a hand lens.

Habitat: meadow, forest, pond

Known for: large selection of woody plants

Difficulty: easy

Tuesday, November 19, 2019, 10 a.m.-2 p.m.

Mass Audubon Habitat Education Center and Wildlife Sanctuary, Belmont, MA

Program Code: BOT3315

Instructor: Roland "Boot" Boutwell, naturalist

Fee: \$48 (Members)/\$60 (Nonmembers)

Limit: 16

Certificate: Field: FB/Adv.FB2019



Wright-Locke Farm, Winchester, MA

LECTURES

2019 CONSERVATION LECTURE SERIES

Native Plant Trust presents the 2019 Conservation Lecture Series, sharing the “Plant Communities of Massachusetts” talk at libraries around the state, free of charge. “Plant Communities of Massachusetts” offers audiences an overview of the extraordinary diversity of native plant communities in the state, with example plants and environmental features. You will leave with greater awareness and appreciation of the area’s habitats as well as knowledge about plant communities’ current status and ways to conserve local natural resources. This statewide initiative is made possible with the support of Local Cultural Council grants from the following towns:

SPRINGFIELD

Saturday, September 7, 2019, 1-2 p.m.

Central Library, 220 State Street,
Springfield, MA

Program Code: LEC0102

TAUNTON

Saturday, September 21, 2019, 2-3 p.m.

Taunton Public Library, 12 Pleasant Street,
Taunton, MA

Program Code: LEC0105

GREENFIELD

Saturday, October 5, 2019, 1-2 p.m.

Greenfield Public Library, 402 Main Street,
Greenfield, MA

Program Code: LEC0101

PLYMOUTH

Saturday, November 2, 2019, 1-2 p.m.

Plymouth Public Library, 132 South Street,
Plymouth, MA

Program Code: LEC0104

LAWRENCE

Thursday, November 7, 2019,
6:30-7:30 p.m.

Lawrence Public Library, 51 Lawrence
Street, Lawrence, MA

Program Code: LEC0103

READING LANDSCAPES: ‘PLACE’ AS CREATION AND REFLECTION

Join Courtney Allen, landscape historian and Director of Public Programs at Native Plant Trust, for a journey to discover the layers of our relationships to our surroundings. Together, we delve into why and how we define and understand place through the lenses of history, design, experience, and memory. This talk is a primer on how to “read” landscapes in our daily lives and what those landscapes can reveal about us.

Thursday, February 20, 2020, 1:30-3 p.m.

Garden in the Woods, Framingham, MA

Program Code: LEC2001

Instructor: Courtney Allen, landscape historian and Director of Public Programs,
Native Plant Trust

Fee: \$23 (Members)/\$27 (Nonmembers)

Certificate: Elective: HD/Adv.HD

HORTICULTURE + DESIGN



American dog violet (*Viola labradorica*)

WHAT TO PROPAGATE WORKSHOP: PLANT DIVISION

Get your hands dirty with asexual propagation by division. We examine several forms of divisions, from tearing plants apart with a shovel to digging them up and delicately severing rhizomes, and learn which method is best for each individual plant. Join Dan Jaffe, co-author of *Native Plants for New England Gardens*, to learn what to propagate and how to do it. Please note: This workshop is the companion to *What to Propagate and How to Do It*.

Thursday, August 1, 2019, 10-11 a.m.
Garden in the Woods, Framingham, MA
Program Code: HOR3131
Instructor: Dan Jaffe, horticulturist,
Norcross Wildlife Foundation
Fee: \$26 (Members)/\$32 (Nonmembers)
Limit: 16
Certificate: Elective: HD/Adv.HD

THE BEST WEEDS

What are weeds? Why do they exist and how can we make use of them? What roles do these plants play in our ecosystems? There is a vast difference between Japanese knotweed and a native violet or goldenrod. Join Dan Jaffe, co-author of *Native Plants for New England Gardens*, for a fascinating discussion about which weeds to love and how to avoid the rest.

Thursday, August 8, 2019, 1-3 p.m.
Garden in the Woods, Framingham, MA
Program Code: HOR8023
Instructor: Dan Jaffe, horticulturist,
Norcross Wildlife Foundation
Fee: \$26 (Members)/\$32 (Nonmembers)
Limit: 16
Certificate: Elective: HD/Adv.HD

HORTICULTURE + DESIGN

SEED SAVING

Seed saving brings tremendous benefits to the willing gardener. Learn how seeds develop, stay dormant, and germinate. This hands-on workshop covers harvesting, cleaning, and storing a wide spectrum of native seeds. Spend time in the field observing and collecting seeds, then practice cleaning. Take your seeds home at the end of class. Bring a lunch and dress appropriately for the field.

Sunday, August 18, 2019, 10 a.m.-3 p.m.

Nasami Farm, Whately, MA

Program Code: HOR3205

Instructor: Kate Stafford, horticulturist

Fee: \$66 (Members)/\$80 (Nonmembers)

Limit: 16

Certificate: Elective: all certificates

FOR US AND THEM: POLLINATORS AND EDIBLES

While aesthetics have long ruled supreme in gardening, people increasingly select plants with ecosystem value in mind. The popularity of edible and pollinator gardens has skyrocketed, but the details are critical for success. Which plants attract which pollinators? Which edibles are resistant to diseases and pests? Join Dan Jaffe, co-author of *Native Plants for New England Gardens*, to learn how low-maintenance native plants can feed both people and pollinators.

Wednesday, August 21, 2019,

9:30 a.m.-12:30 p.m.

Garden in the Woods, Framingham, MA

Program Code: HOR8024

**Instructor: Dan Jaffe, horticulturist,
Norcross Wildlife Foundation**

Fee: \$40 (Members)/\$48 (Nonmembers)

Limit: 16

Certificate: Elective: HD/Adv.HD

HORTICULTURAL TECHNIQUES

Good horticultural practices form the backbone of any successful garden, and understanding how to apply these practices is the first step toward becoming a horticulturist. Learn how to select the right plant for the right place and how to plant and care for native plants. We study the proper techniques for transplanting, preparing soil, mulching, watering, and pruning as well as maintaining, winterizing, and preparing the garden for the next growing season.

**Wednesdays, September 11, 18, 25, 2019,
1-3 p.m.**

Garden in the Woods, Framingham, MA

Program Code: HOR3600

Instructor: Horticulture staff, Native Plant Trust

Fee: \$92 (Members)/\$109 (Nonmembers)

Limit: 16

Certificate: Core: HD

UNDERSTANDING AND MANAGING SOILS

This one-day intensive explores the biotic and abiotic components that create native soils and explains how these factors inform local flora. The class takes a closer look at soil structure and soil biology in miniature lab experiments.

**Saturday, September 14, 2019,
10 a.m.-4 p.m.**

Nasami Farm, Whately, MA

Program Code: HOR3604

**Instructor: Alexis Doshas, Propagator and
Facilities Coordinator, Nasami Farm, Native
Plant Trust**

Fee: \$108 (Members)/\$132 (Nonmembers)

Limit: 16

**Certificate: Core: HD; Elective: all
certificates**

HORTICULTURE + DESIGN

NATIVE PLANTS FOR PROFESSIONALS

Learn about the best native plant materials available today for use in the design and landscape trades. Covering everything from plants for tough spots to specialty plants for specific habitats, this class adds a host of less-familiar native species to your plant palette.

Mondays, September 23, 30, 2019
10 a.m.-3 p.m.

Garden in the Woods, Framingham, MA
Program Code: HOR1200

Instructor: Dan Jaffe

Fee: \$180 (Members)/\$220 (Nonmembers)
Limit: 20

Certificate: Core: Adv.HD

Cosponsor: Ecological Landscape Alliance

RESIDENTIAL LANDSCAPE DESIGN

This multi-session course tackles the different aspects of the landscape design process. Workshop sessions focus on design methods using site analysis techniques and schematic design tools. You will consult with the instructor and work on projects of your own choosing. Discussions about plants and habitats are interspersed with lectures on such topics as criteria for plant choices and determining placement. Weekly project development strengthens learning objectives.

Thursdays, October 10, 17, 24, 31,
November 14, 2019, 1-4 p.m.

Garden in the Woods, Framingham, MA
Program Code: HOR4000

Instructor: Cheryl Salatino, landscape designer, Dancing Shadows Garden Design, and Massachusetts certified horticulturist

Fee: \$270 (Members)/\$330 (Nonmembers)
Limit: 16

Certificate: Core: HD; Elective: Adv.HD

Cosponsor: Ecological Landscape Alliance

NATIVE WOODY PLANT MATERIALS

Explore the huge variety of native trees, shrubs, and woody vines. Learn which species grow well in shade, which support local wildlife, and how to stagger plantings for continual bloom, fruit production, and fall color. The class discusses growth characteristics, cultural requirements, and best horticultural uses. It includes lectures and walks in the Garden as well as a field trip to Arnold Arboretum. Bring a bag lunch.

Mondays, October 21, 28, 2019
10 a.m.-3 p.m.

Garden in the Woods, Framingham, MA
and Arboretum of Harvard University,
Boston, MA

Program Code: HOR1100

Instructor: Dan Jaffe

Fee: \$180 (Members)/\$220 (Nonmembers)
Limit: 20

Certificate: Core: HD



Jack-in-the-pulpit (*Arisaema triphyllum*)

HORTICULTURE + DESIGN

NAVIGATING PUBLIC DESIGN

Community spaces are exciting projects to envision and realize. In this half-day workshop, learn a process to bring stakeholders together to collaborate in creating outdoor spaces of meaning and beauty. Understand how to use your creative ideas to build partnerships, fundraise, overcome obstacles, and draw visitors to your public landscape. We will emphasize the creation of spaces that are both ecologically and operationally sustainable.

**Friday, November 1, 2019,
10:30 a.m.-2:30 p.m.**

Garden in the Woods, Framingham, MA

Program Code: HOR8026

Instructor: Staci Jasin, landscape designer

Fee: \$60 (Members)/\$72 (Nonmembers)

Limit: 16

Certificate: Elective: HD/Adv.HD

Cosponsor: Ecological Landscape Alliance

PROPAGATING PLANTS FROM SEMI-HARDWOOD CUTTINGS

Enhance your garden! Join Arnold Arboretum manager of plant production Tiffany Enzenbacher to learn how to propagate woody plants from fall cuttings. You will collect and stick cuttings of several taxa (such as Ilex and Rhododendron) and will take your propagules home. After rooting, small plants may be ready to transplant as early as next year. Post-class nurturing will be required. Fee for all materials is included in the cost of the class. Please bring your own pruners to class.

Thursday, November 14, 5-7 p.m.

Dana Greenhouse Classroom, Arnold Arboretum of Harvard University, Boston, MA

Program Code: HOR3078

Instructor: Tiffany Enzenbacher, manager of plant production, Arnold Arboretum of Harvard University

Fee: \$42 (Members)/\$52 (Nonmembers)

Certificate: Elective: HD/Adv.HD

Cosponsor: Arnold Arboretum of Harvard University

PLANT ADAPTATIONS

Have you ever wondered why plants look the way they do? Every feature of the plant is a result of an adaptation designed to afford reproductive, environmental, or cultural success. This class will explore the myriad ways plants have adapted to different habitats and soil types as well as pollination and dispersal schemes. You will not look at plants the same way again!

Friday, November 15, 2019, 12-2 p.m.

Garden in the Woods, Framingham, MA

Program Code: HOR8027

Instructor: Uli Lorimer, Director of Horticulture, Native Plant Trust

Fee: \$30 (Members)/\$36 (Nonmembers)

Limit: 20

Certificate: Elective: all certificates

Cosponsor: Ecological Landscape Alliance

SLOW GARDENING

Why wait until the last minute to plan and prepare your gardens? Save your back and knees from all that weed and turf removal! Learn some passive, elegant, and simple techniques to let nature do the work for you. A little prep now will give you a fresh start come next spring.

Saturday, November 16, 2019, 1-3 p.m.

Nasami Farm, Whately, MA

Program Code: HOR4045

Instructor: Alexis Doshas, Propagator and Facilities Coordinator, Nasami Farm, Native Plant Trust

Fee: \$30 (Members)/\$36 (Nonmembers)

Limit: 16

Certificate: Elective: HD/Adv.HD

Cosponsor: Ecological Landscape Alliance

HORTICULTURE + DESIGN

MEADOWS 1-2-3

A successful meadow is an ecologically vibrant landscape, providing food and habitat to pollinators and wildlife, stabilizing soil, and storing carbon. In this one-day intensive, explore site selection, preparation, neighborhood factors, and design. Learn about grasses, flowering species, plant and seed sources, maintenance protocols, and more. Extensive plant lists and design resources are included.

Friday, December 6, 2019,
10 a.m.-4 p.m.

Garden in the Woods, Framingham, MA

Program Code: HOR8001

Instructor: Kathy Connolly, landscape designer, Speaking of Landscapes, LLC

Fee: \$90 (Members)/\$108 (Nonmembers)

Limit: 30

Certificate: Elective: HD/Adv.HD

LANDSCAPE FOR LIFE

This intensive introductory course will provide the knowledge, skills, and understanding needed to create a great-looking garden that is healthier for people and for the environment. This course is based on the principles of the Sustainable Sites Initiative, the nation's first rating system for sustainable landscapes. The comprehensive curriculum covers topics ranging from soils, water, and plants to landscape materials.

Thursdays, January 23, 30, February 6, 13,
2020, from 12-3 p.m.

Arnold Arboretum of Harvard University,
Boston, MA

Program Code: HOR3720

Instructor: Trevor Smith, lead designer,
Land Escapes

Fee: \$216 (Members)/\$264 (Nonmembers)

Limit: 16

Certificate: Core: Adv.HD; Elective: HD

Cosponsor: Arnold Arboretum of Harvard
University

GARDENING FOR CLIMATE CHANGE

What changes can we expect to see—and already see—in our native gardens and landscapes due to changing climate? What steps can we take to address these changes, and what do they mean for our local ecology? We will explore these big questions and discuss our role as stewards of our gardens, forests, and fields.

Thursday, January 23, 2020, 6-8 p.m.

Nasami Farm, Whately, MA

Program Code: HOR8018

Instructor: Alexis Doshas, Propagator and
Facilities Coordinator, Nasami Farm, Native
Plant Trust

Fee: \$30 (Members)/\$36 (Nonmembers)

Limit: 16

Certificate: Elective: HD/Adv.HD

Cosponsor: Boston Society of Landscape
Architects

SEEING IS BELIEVING: A VISUAL GARDEN DESIGN WORKSHOP

Many of us get stuck when we want to create something new in the landscape. Because we live in a three-dimensional world, we can't visualize images drawn on paper. This collaborative, hands-on workshop offers a different approach to exploring space, views, light, and plant selection. Fun, fast, and free-form strategies are used to stimulate the imagination. Come to get unstuck.

Saturday, February 22, 2020,
10:30 a.m.-3 p.m.

Garden in the Woods, Framingham, MA

Program Code: HOR4047

Instructor: Cheryl Salatino, landscape
designer, Dancing Shadows Garden
Design, and Massachusetts Certified
Horticulturist

Fee: \$60 (Members)/\$72 (Nonmembers)

Limit: 16

Certificate: Elective: HD/Adv.HD

Cosponsor: Ecological Landscape Alliance

HORTICULTURE + DESIGN

GRAFTING WOODY PLANTS: FRUIT TREES

Grafting is the technique of joining parts of separate plants in such a manner that they unite and continue their growth as one. Learn basic principles of grafting with an overview of different types of dormant-season grafts. Arnold Arboretum propagator Sean Halloran will provide step-by-step instructions so that you can practice both cleft and side veneer grafts using apple root stock. Simple after-care will be required until planting out in springtime. Registrants will need to sign an Assumption of Risk and Release in order to participate in this class.

Wednesday, February 26, 5-7:30 p.m.

Dana Greenhouse Classroom, Arnold Arboretum of Harvard University, Boston, MA

Program Code: HOR3077

Instructor: Sean Halloran, plant propagator, Arnold Arboretum of Harvard University

Fee: \$48 (Members)/\$58 (Nonmembers)

Certificate: Elective: HD/Adv.HD

Cosponsor: Arnold Arboretum of Harvard University

WINTER PRUNING

Proper pruning of trees and shrubs improves their health and structure while enhancing their appearance in the landscape. Gain hands-on experience and learn basic pruning principles, including how to make proper cuts, when to prune different species, and how to select and maintain tools.

Thursday, February 27, 2020, 1-3 p.m.

Garden in the Woods, Framingham, MA

Program Code: HOR1213

Instructor: Anna Fialkoff, Senior Horticulturist, Native Plant Trust

Fee: \$30 (Members)/\$36 (Nonmembers)

Limit: 12

Certificate: Elective: HD

CULTIVATING YOUR PLANT COMMUNITIES

Your backyard has a unique plant community based on the ecology and geology of the area. In this three-part workshop, learn to identify appropriate native plants and groupings for your site and create a personalized plant palette and design that is beautiful and enhances biodiversity. Leave the workshop inspired to integrate science and art in your garden.

Fridays, February 28, March 6, 13, 2020, 1-4 p.m.

Garden in the Woods, Framingham, MA

Program Code: HOR3607

Instructor: Staci Jasin, landscape designer

Fee: \$135 (Members)/\$162 (Nonmembers)

Limit: 16

Certificate: Elective: all certificates

Cosponsor: Ecological Landscape Alliance



Red chokeberry (*Aronia arbutifolia*)

HORTICULTURE + DESIGN

LANDSCAPE STUDIES

LANDSCAPE STUDIES

Nothing beats the experience of seeing beautiful designs with native plants. These expert-led excursions examine native plants and explore techniques to cultivate them for function and beauty.

MEADOWS TOUR OF SOUTHEASTERN CONNECTICUT

Join us as we visit meadows and fields in search of warm-season grasses and native flowers in full bloom. We begin with two meadows at Connecticut College Arboretum, then explore three additional meadow sites in southeastern Connecticut. The walking tour focuses on why meadows are valuable, how they grow, and how they persist. An extensive resource and plant list is included, and there will be opportunities for photography during the session. Expect to walk about two miles on relatively level terrain but with potentially uneven surfaces. Please wear good walking shoes and good insect protection. Bring a bag lunch.

Saturday, August 3, 2019, 8:45 a.m.-3 p.m.

Connecticut College Arboretum, New London, CT, and field sites

Program Code: HDT8054

Instructor: Kathy Connolly, landscape designer, Speaking of Landscapes, LLC

Fee: \$80 (Members)/\$96 (Nonmembers)

Limit: 20

Certificate: Field: FB; HD/Adv.HD

Cosponsor: Connecticut College Arboretum

HAYWARD BROOK FARM GARDEN

Join Alan Smith for a tour of his gorgeous 16-acre property in Wayland, MA. This well-established site features walled flower gardens, native wildflower meadows, pasture, woodlands, wetland, a pond, a stream, a vegetable garden with greenhouse, and magnificent specimen trees.

**Saturday, August 10, 2019,
10 a.m.-11:30 a.m.**

Wayland, MA

Program Code: HDT8015

Instructor: Alan Smith, gardener extraordinaire and trustee, Native Plant Trust

Fee: \$18 (Members)/\$21 (Nonmembers)

Limit: 18

Certificate: Field: HD/Adv.HD



Hayward Brook Farm

HORTICULTURE + DESIGN

LANDSCAPE STUDIES



Lyman Estate greenhouse

NEW TAKES ON HISTORIC LANDSCAPES: BARRETT HOUSE

Often, gardeners think they must choose between archetypes of the wild native plant garden and the formal classic garden, but there are ecologically friendly ways to create an elegant effect. Explore the Barrett country estate's 70 acres on this interdisciplinary walk and discussion. Delve into historic landscape design and plantings such as the site's orchards and wildflower fields and learn different ways to apply the visual sophistication of grand gardens to your own property using native plants.

Saturday, August 24, 1:30-3:30 p.m.

New Ipswich, NH

Program Code: HDT5004

Instructor: TBD

Fee: \$24 (Members)/\$28 (Nonmembers)

Limit: 16

Certificate: Field: HD/Adv.HD

Cosponsor: Historic New England

NEW TAKES ON HISTORIC LANDSCAPES: LYMAN ESTATE

Often, gardeners think they must choose between archetypes of the wild, native plant garden and the formal, classic garden, but there are ecologically friendly ways to create an elegant effect. Explore the Lyman Estate Greenhouses and 37-acre property on this interdisciplinary walk and discussion. Delve into the history of greenhouses and current plant nursery practices and examine their historical and contemporary influences on naturalistic landscapes. Learn various ways to apply the visual sophistication of grand estates to your own property using native plants. This program will also reference Native Plant Trust's native plant nursery, Nasami Farm.

**Saturday, October 5,
10:30 a.m.-12:30 p.m.**

Lyman Estate, Waltham, MA

Program Code: HDT5006

Instructor: TBD

Fee: \$30 (Members)/\$36 (Nonmembers)

Limit: 16

Certificate: Field: HD/Adv.HD

Cosponsor: Historic New England

HORTICULTURE + DESIGN

LANDSCAPE STUDIES

CREATING THE ARTISTS' TRAIL LANDSCAPE

Join award-winning landscape architecture firm STIMSON for a landscape experience of its newly completed Artists' Trail at the Florence Griswold Museum. Since 2016, STIMSON has worked with the Museum to implement a transformative landscape Master Plan that focuses on an expanded interpretation of the property's history as a farm, while simultaneously restoring lost site ecologies for wildlife and birding habitat. The Artists' Trail provides visitors with a more authentic sense of the link between art, history, and site ecology. This landscape study will address conceptual design, restoration planting, and construction methods.

Thursday, September 12, 2019,
10 a.m.-1 p.m.

Florence Griswold Museum, Old Lyme, CT
Program Code: HDT5007

Instructor: Lauren Stimson, principal,
STIMSON

Fee: \$45 (Members)/\$54 (Nonmembers)
Limit: 18

Certificate: Elective: HD/Adv.HD
Cosponsor: Florence Griswold Museum
and Boston Society of Landscape
Architects

TRACING CONSERVATION HISTORY: BACK BAY

Who and what inspired current practices and perspectives in plant protection? Walk the journey of the conservation movement at the turn of the twentieth century. Learn about historic local efforts and their impact on the national conversation right at Native Plant Trust's birthplace. Wear walking shoes and dress for the weather.

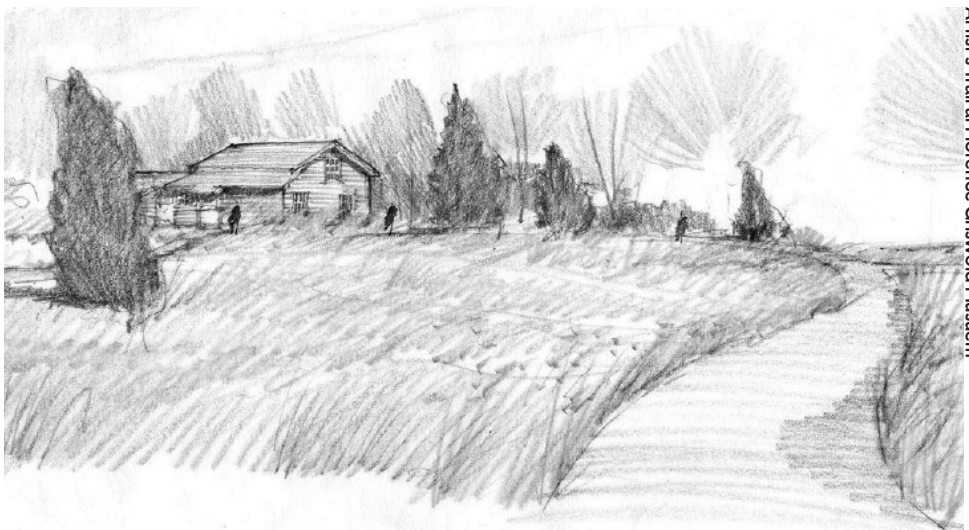
Tuesday, November 5, 2019, 1:30-3 p.m.
Back Bay, Boston, MA

Program Code: BOT5207

Instructor: Courtney Allen, landscape
historian and Director of Public Programs,
Native Plant Trust

Fee: \$23 (Member)/\$27 (Nonmember)
Limit: 12

Certificate: Field: all certificates



Artists' Trail at Florence Griswold Museum

CHILDREN + FAMILIES

All programs are for children with adult companions.

STORY TIME AND MUSICAL PLAY AT GARDEN IN THE WOODS

Bring the little ones for nature-inspired stories, songs, and crafts! Stories are geared for children ages three to eight. Afterward, children are invited to explore the local flora and fauna in the Garden, play in the Family Activity Area, or pick up a Scavenger Hunt card and take a walk through the woods.

Saturdays, August 10, 24, September 7, 2019, 10:30 a.m.-11:30 a.m.

**Garden in the Woods, Framingham, MA
Program Code: FAM7530**

Instructor: Elaine Kessler, professional storyteller and children's educator

Fee: Free of charge with Garden admission



SCHOOL PROGRAMS

Bring your child's class to experience the magic of Garden in the Woods! Native Plant Trust offers four distinct, plant-centered programs that meet the state science curriculum standards for pre-K through Grade 4. Teacher-naturalists lead the students on an hour of inquiry-based learning through a variety of habitats to build critical thinking skills. Visit www.NativePlantTrust.org for more information.

Seeing Green - Grades Pre-K and K

Exploring Plants and their Homes - Grades 1 and 2

Plant Survival and Adaptation—Grade 3

The Life of a Plant—Grades 3 and 4

REGISTRATION

To register for programs, please visit www.NativePlantTrust.org/education. Visa and MasterCard accepted. For questions regarding registration, call 508-877-7630, ext. 3303.

Advance registration is required for all fee-based programs and is accepted on a first-come, first-served basis upon full payment. Early registration is encouraged; programs with insufficient registration may be cancelled five business days before the scheduled start date. If your requested program is filled, please add yourself to the wait list; if space becomes available, you will be contacted according to your position on the wait list. No refunds or transfers can be given for withdrawals within a week of the program start date, for programs already in progress, or for class sessions you have not attended. By attending a Native Plant Trust program, you give permission to be photographed. These photos may be used for marketing purposes.

EQUAL ACCESS

If you need assistance or special accommodations, call 508-877-7630, ext. 3303, at the time you register or as soon as possible thereafter.

MEMBERSHIP

For immediate discounts on programs, join or renew when you register.

Members help conserve and promote New England's native plants to ensure healthy, biologically diverse landscapes.

Membership benefits include:

- Discounts on educational programs throughout New England
- Annual subscription to Native Plant Trust publications
- Monthly e-newsletter
- Discounts at a wide range of regional and mail-order nurseries through our Nursery Partner Program and our Garden Shops
- Access to members-only on-demand webinars
- Invitations to special, members-only events

Membership levels

- Individual \$40
- Individual with Garden Access \$55
- Family/Friends \$75
- Contributor \$115
- Supporter \$250
- Sustainer \$500
- Conservation Circle \$1,000

For a full description of member benefits, please visit www.NativePlantTrust.org/membership or call 508-877-7630 x3104.

MAKE AN IMPACT

Native Plant Trust is a leader in conservation and horticulture programming, pioneering models such as the first independent field botany certification program. Public education is key to conserving the region's native plants and to ensuring the health and diversity of our landscapes.

Native Plant Trust offers hundreds of unique public programs each year, including:

- Adult learning opportunities at Garden in the Woods, Nasami Farm, six native plant sanctuaries, and additional locations throughout New England
- Online learning through courses, webinars, and digital tools
- Regional initiatives such as Pollinate New England
- Continuing education for professionals in relevant fields
- School programs at Garden in the Woods

Support for educational activities comes from generous friends like you. Your gift today will help grow awareness and knowledge about the importance of native plants in their habitats and in cultivated landscapes.

Donate online at: www.NativePlantTrust.org/fundprograms

phone at: 508-877-7630 x3802

mail (please include this page) to: Native Plant Trust
Philanthropy Department
180 Hemenway Road
Framingham, MA 01701

Yes! You can count on me to support native plant education.

Name: _____

Street: _____

City/State/Zip: _____

Email/Phone: _____

Check enclosed (payable to Native Plant Trust)

\$1,000 \$625 \$300 \$100 \$50 Other

Additional:

- My donation is coming from a donor advised fund or family foundation.
- My/My spouse's company will match my gift. Form enclosed.
- My business is interested in sponsoring programs, please contact me.
- I would like to support new initiatives, please contact me.

This donation will not renew your membership except at the \$1,000 Conservation Circle level.





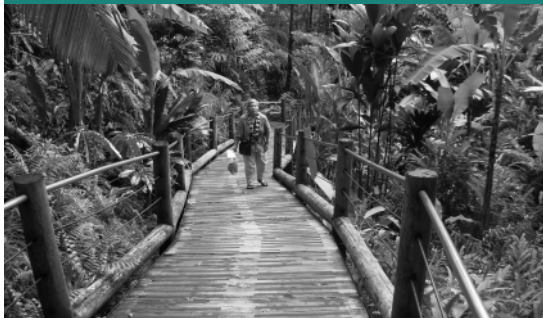
A NATIVE PLANT TRUST TRIP TO

Discover Botanical Hawaii

APRIL 1-11, 2020

Explore the finest
botanical gardens and
lush native flora in situ
on Hawaii, Oahu,
and Kauai!

[http://www.native
planttrust.org/education/
botanical-travel/](http://www.nativeplanttrust.org/education/botanical-travel/)



Native Plant Trust

180 Hemenway Road
Frammingham, Massachusetts 01701-2699

ADDRESS SERVICE REQUESTED